



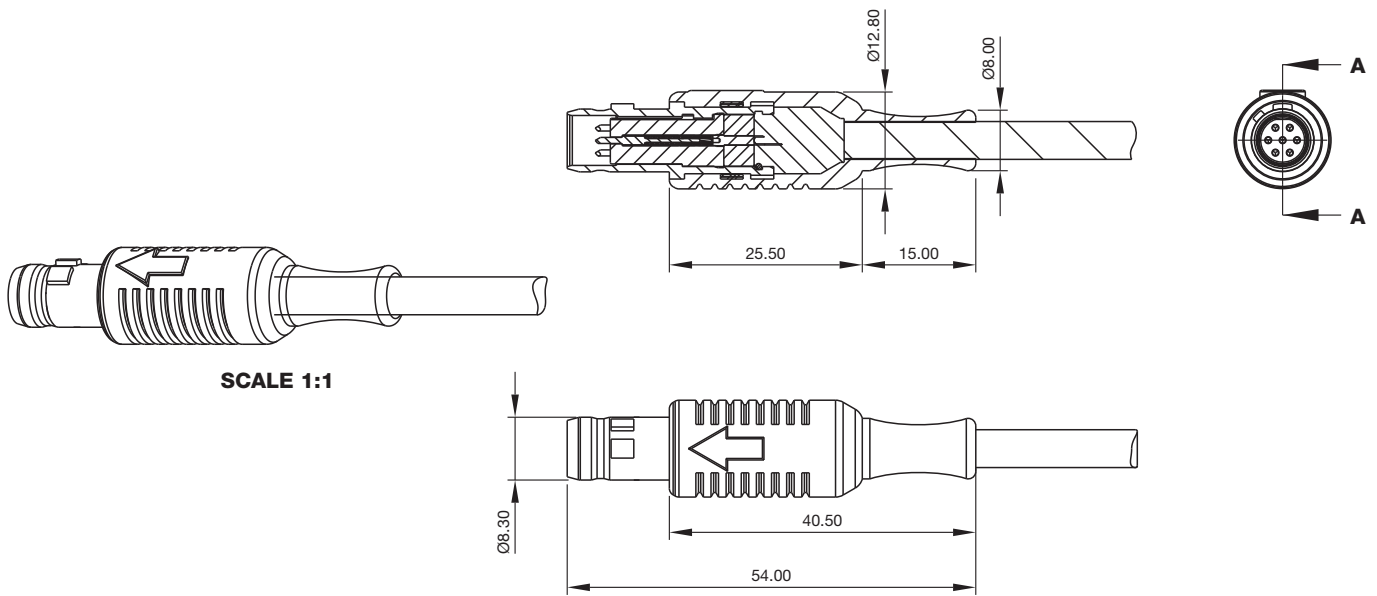
Miniature Circular Connectors

- HyperSpring® spring loaded contacts, self cleaning wiping action
- 7, 13, 19 ways
- Combine robust environmental performance with compact size and light weight
- Easy and fast snap on locking mechanism
- Full line EMI shielding
- IP67 sealing when mated and unmated
- Different hardware coding to avoid mismatching
- Overmolding solutions
- Upgrade commercial high speed Fast Ethernet, USB, IEEE 1394 interconnect to Mil Spec performances
- High-reliability commercial and military interconnect applications: Tactical Computers, Field Radios, Dismounted Soldier, Weapon Interconnect, Battery Chargers, Missiles, Helmet Breakaway System, Commercial Airframe Sensors, Autosport, Diagnostics
- Protection cap available on request

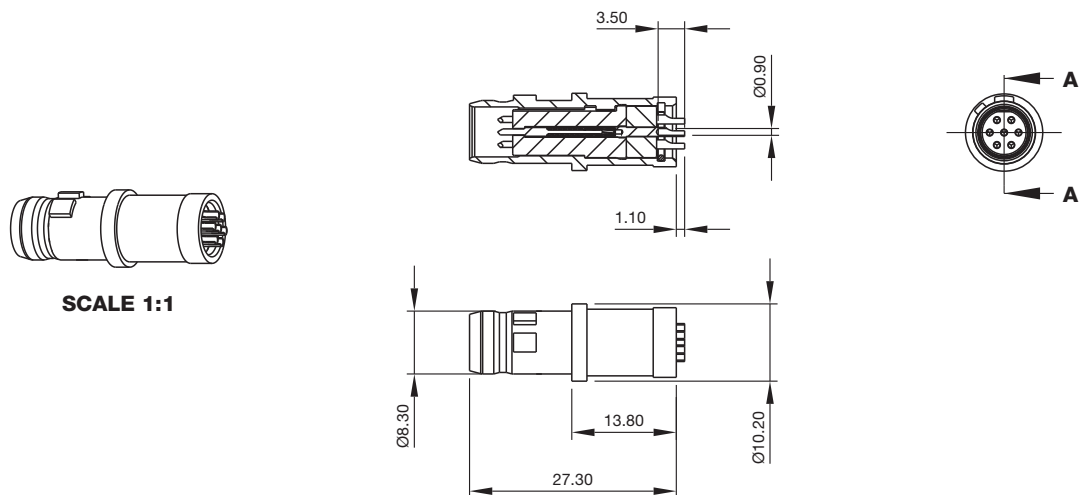
Technical Characteristics

General		Shock	
HyperSpring Contact Number	7,13,19		EIA364.27 Condition G
Receptacle Contact Termination	Solder Cup, Dip Solder	Weight (Plug + Receptacle)	9 g (7 ways) 14 g (13 ways) 16 g (19 ways)
Plug Contact Termination	Solder Cup	Materials and Plating	
Cable Diameter Range	Max 6 mm (7 ways) Max 7.5 mm (13 ways) Max 8.5 mm (19 ways)	Housing	
AWG Contact	28-24	- Material	Aluminium Alloy
Hyperspring force (single contact)	Max 1.5 N	- Plating	ZnCo conductive - RoHS compliant
Connector Mating Force	Max 40 N	Overmolding (Plug)	Thermoplastic hotmelt
Connector Unmating Force	Max 40 N	Contact Plating	
Electrical and mechanical characteristics		- Material	Brass, CuBe
EMI Shielding	Yes	- Plating	Gold
Current Rating	3A@25°C	Environmental Characteristics	
Test Voltage (dc) Contact to contact	300 V	Temperature Range	-65°C +80°C
Dielectric Withstanding Voltage (between contacts)	500 V	Salt Spray	EIA364.26 Condition A mated connectors
Contact Resistance (low level)	<15 m Ohm	Humidity	EIA364.31 Method IV
Insulation Resistance	5000 MOhm @ 500V d.c. (EIA364.21)	IP Level	67 mated and unmated
Vibration	EIA364.28 Condition III		

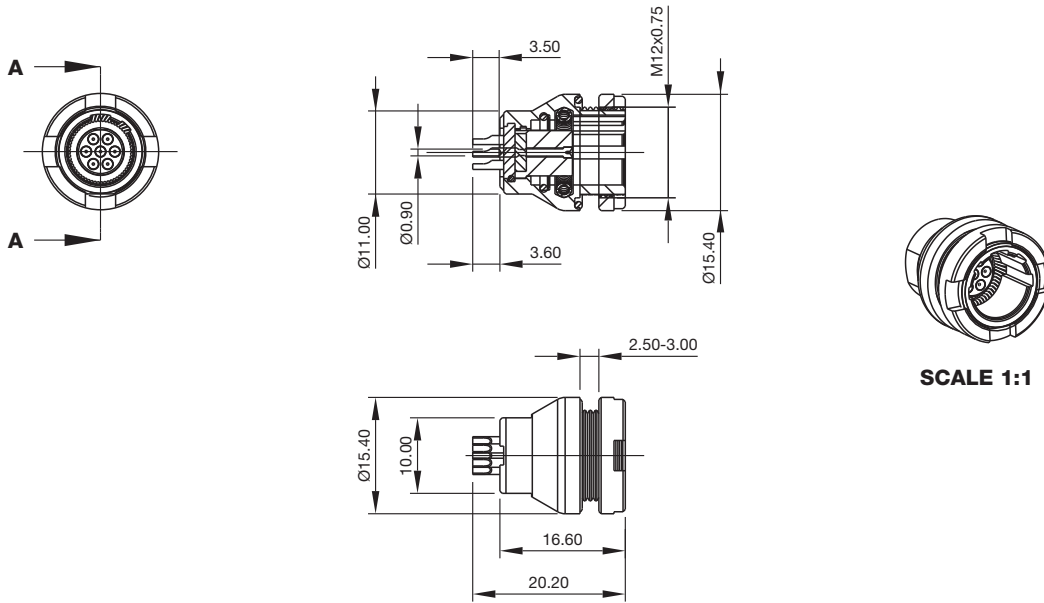
7 Ways Plug with Overmoulding and Cabling



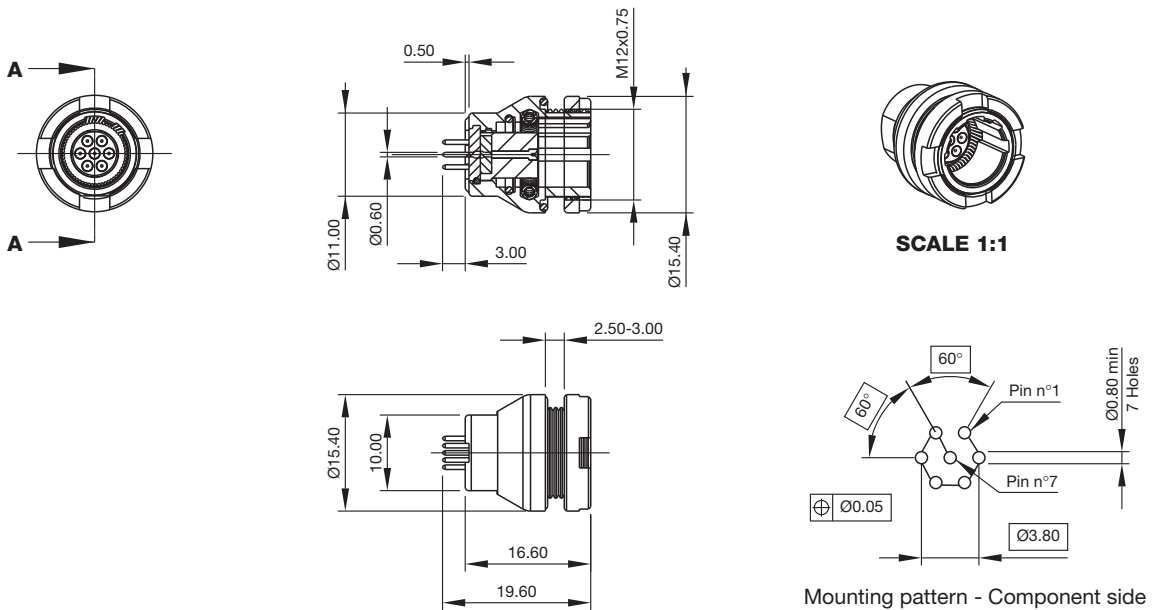
7 Ways Plug - Solder Cup Termination



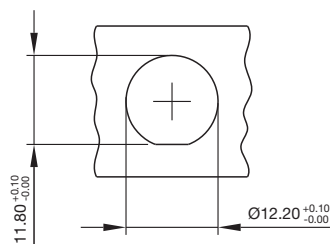
7 Ways Receptacle - Solder Cup Termination



7 Ways Receptacle - Dip Solder Termination



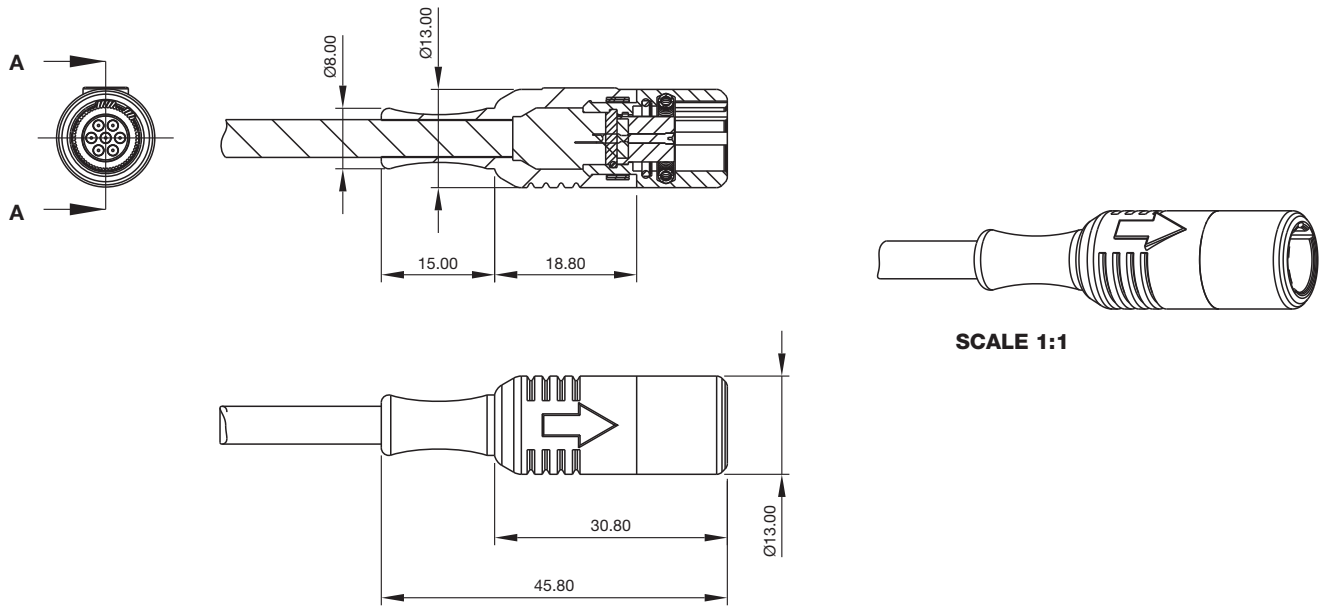
7 Ways Panel Cut-out



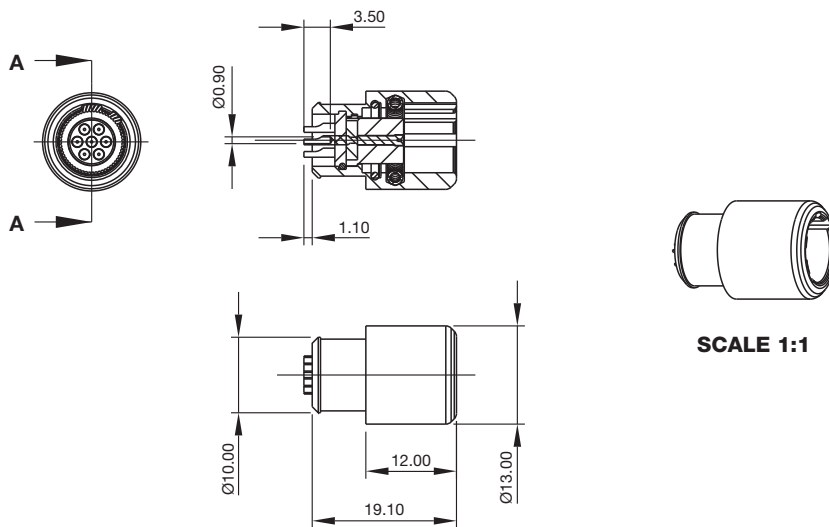
Panel thickness max 3mm

Dimensions are in mm

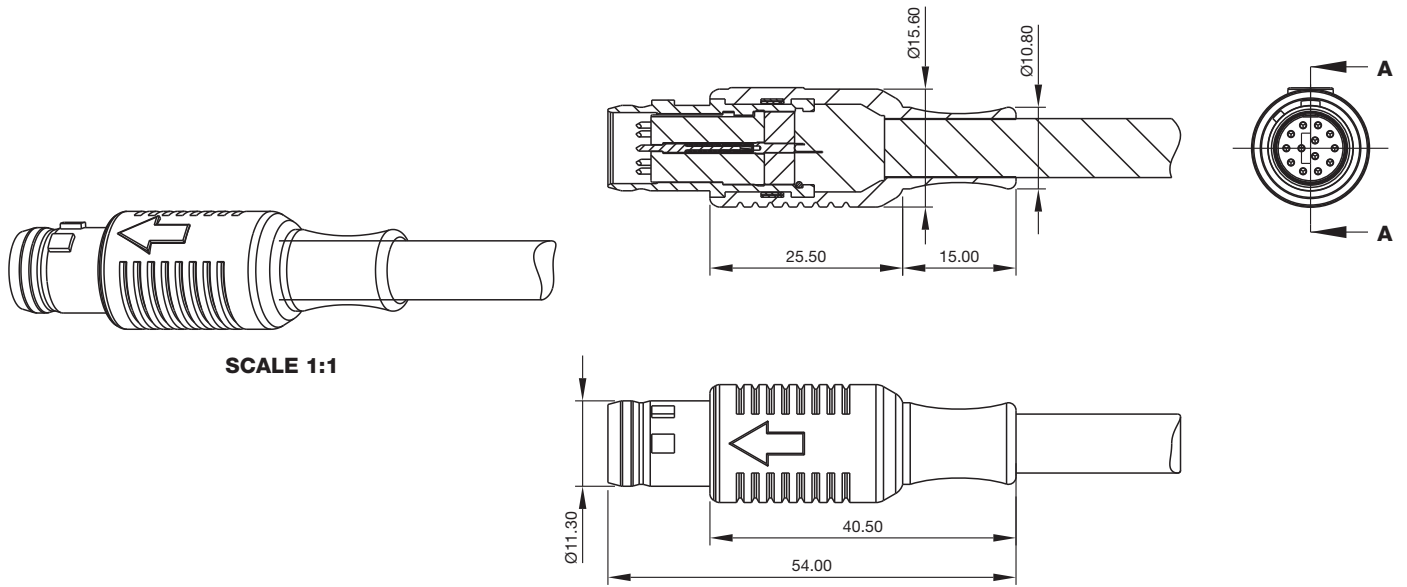
7 Ways Extension with Overmoulding and Cabling



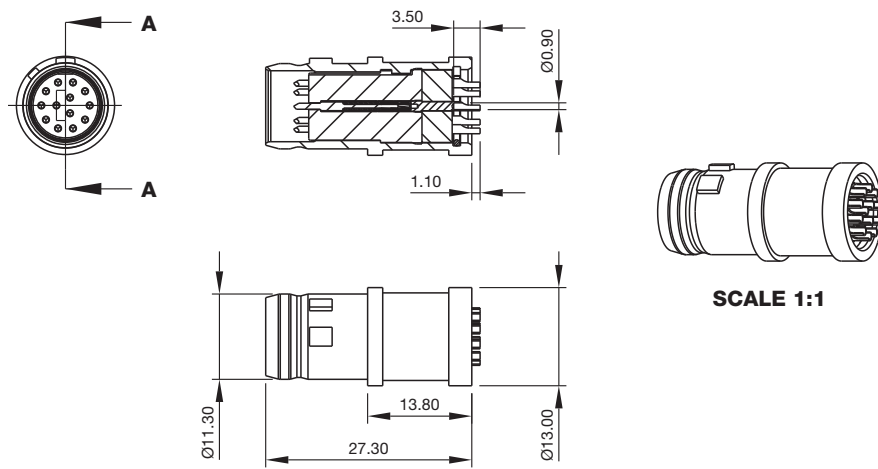
7 Ways Extension - Solder Cup Termination



13 Ways Plug with Overmoulding and Cabling

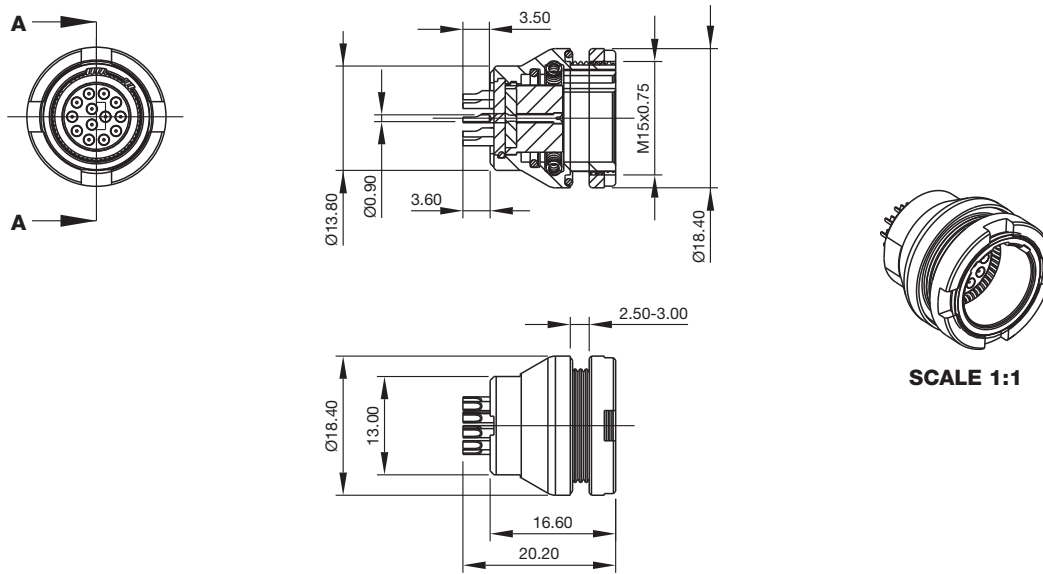


13 Ways Plug - Solder Cup Termination

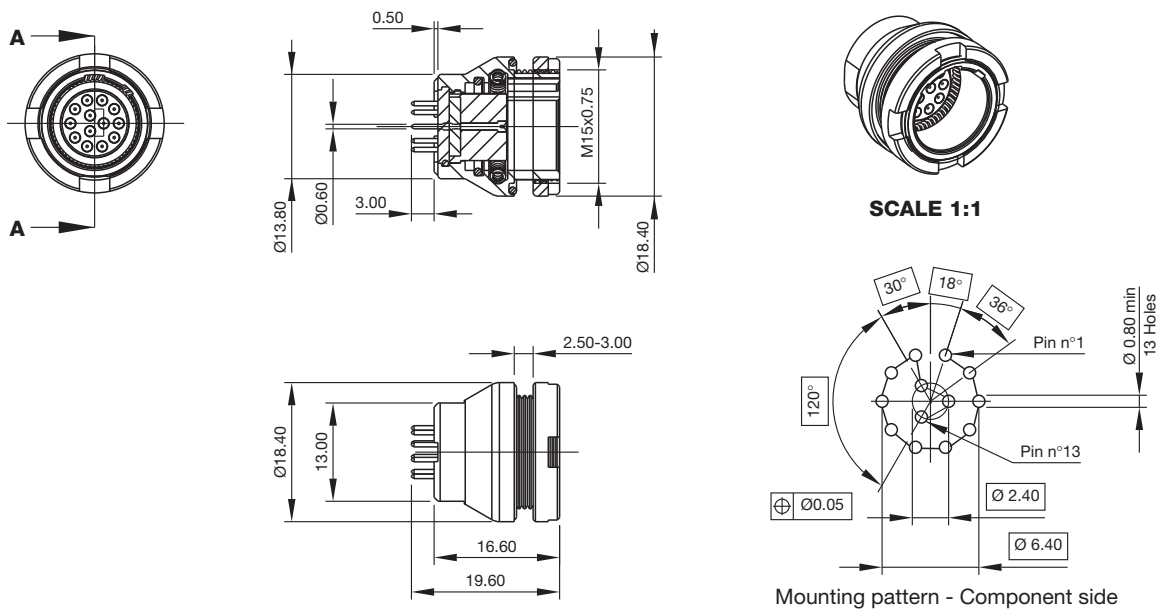


Dimensions are in mm

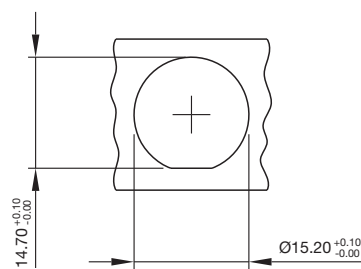
13 Ways Receptacle - Solder Cup Termination



13 Ways Receptacle - Dip Solder Termination



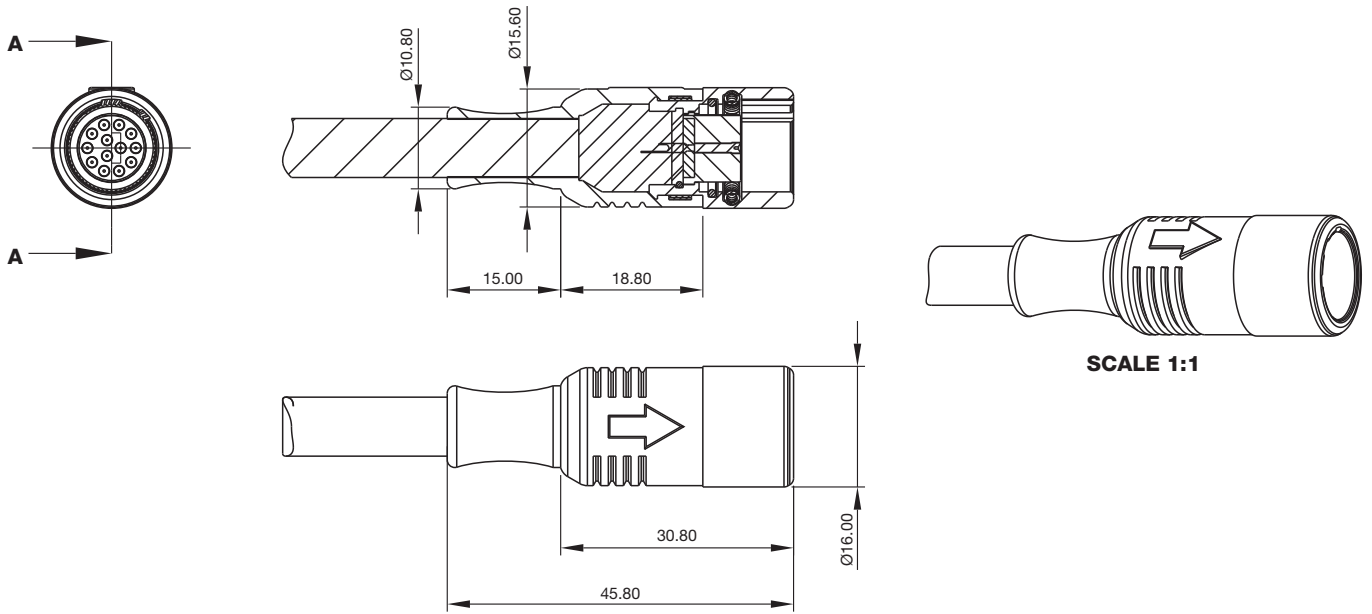
13 Ways Panel Cut-out



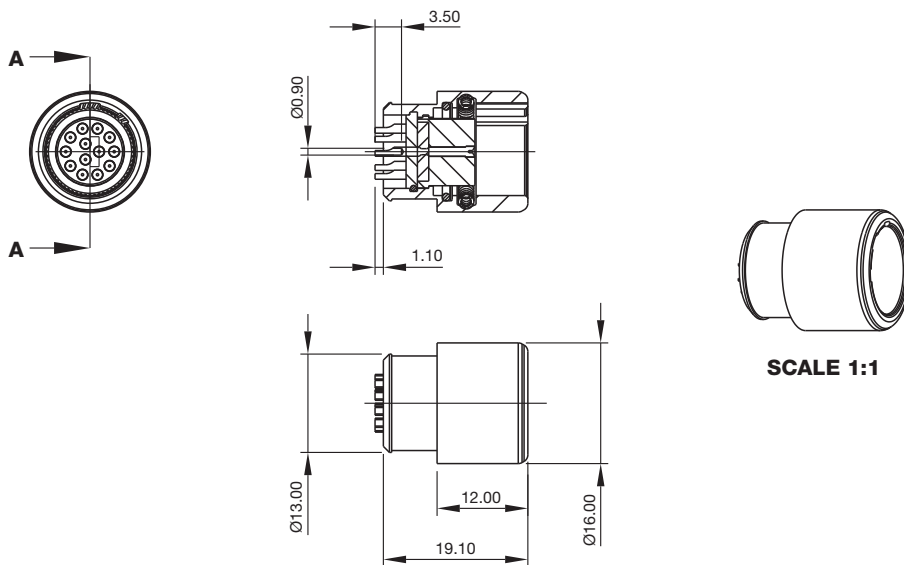
Panel thickness max 3mm

Dimensions are in mm

13 Ways Extension with Overmoulding and Cabling

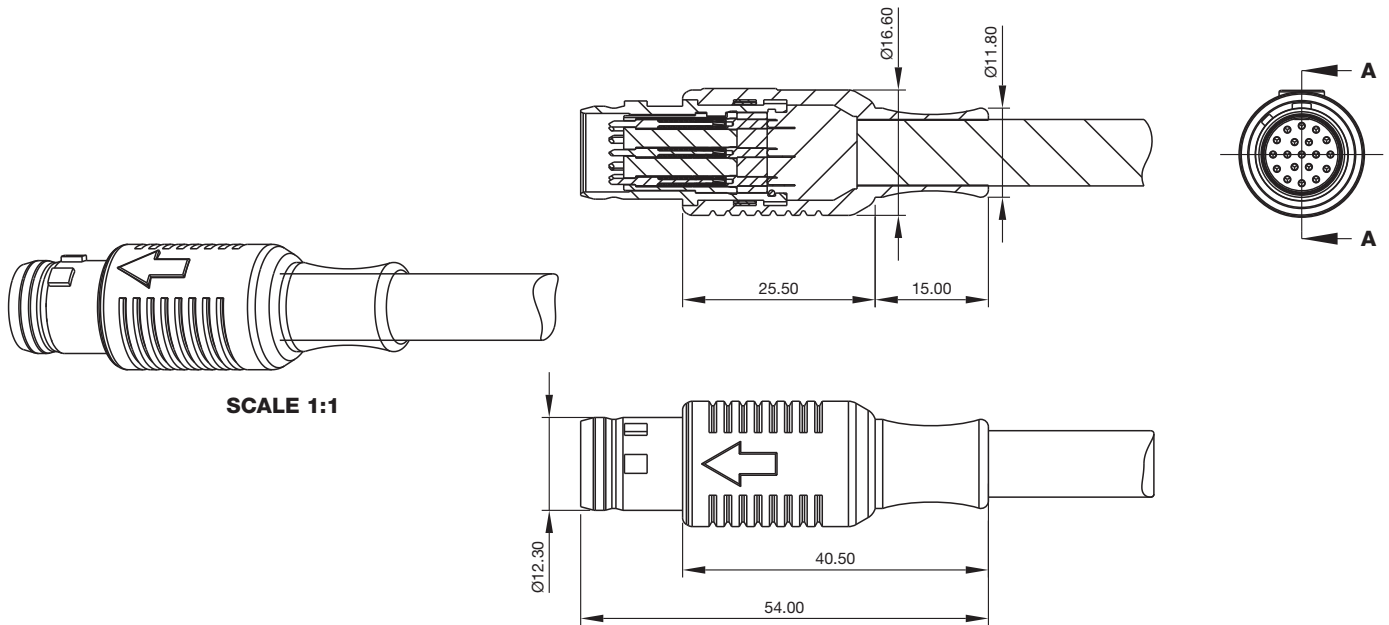


13 Ways Extension - Solder Cup Termination

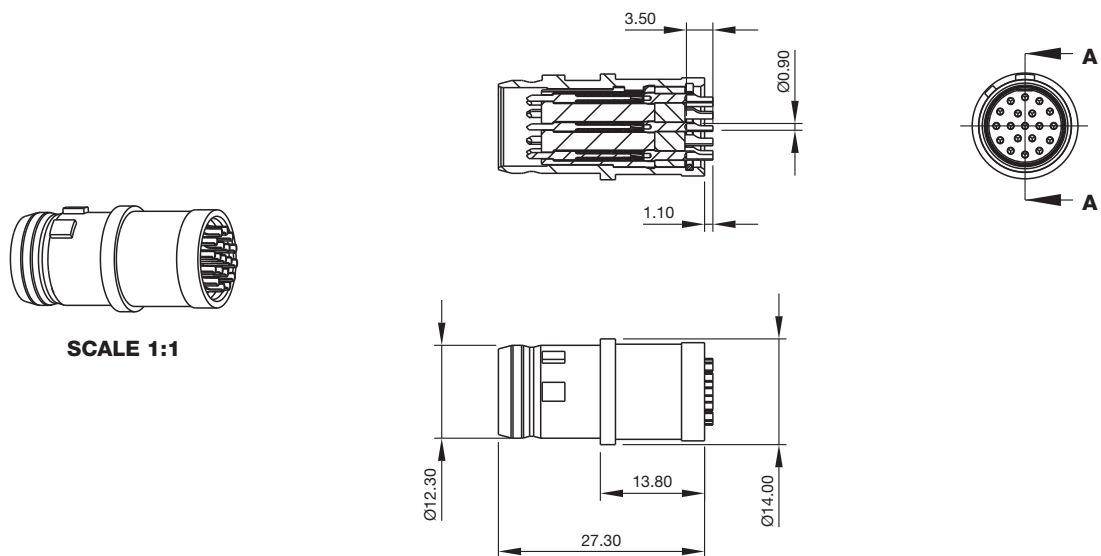


Dimensions are in mm

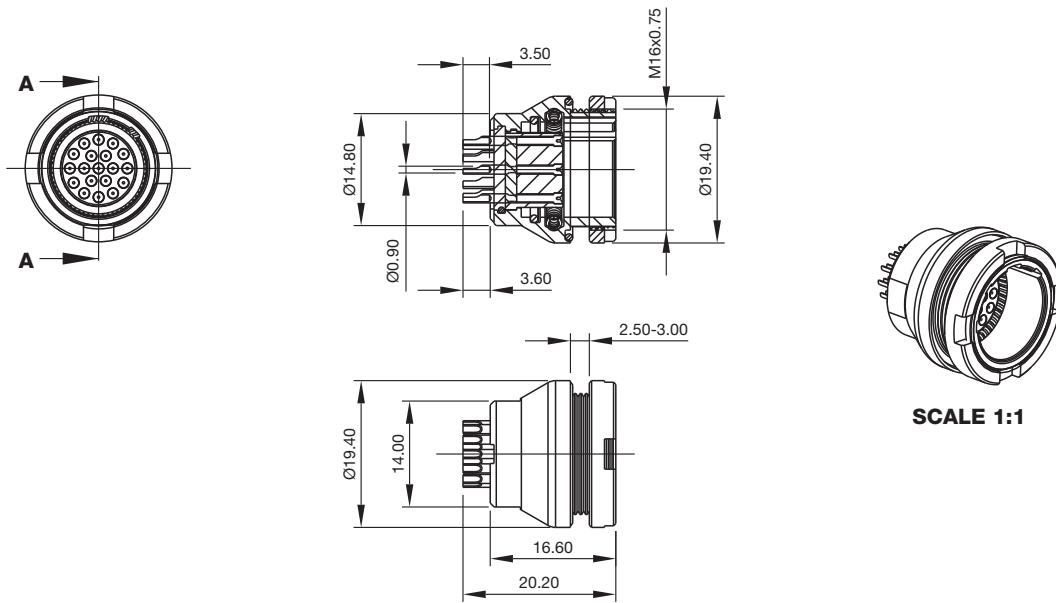
19 Ways Plug with Overmoulding and Cabling



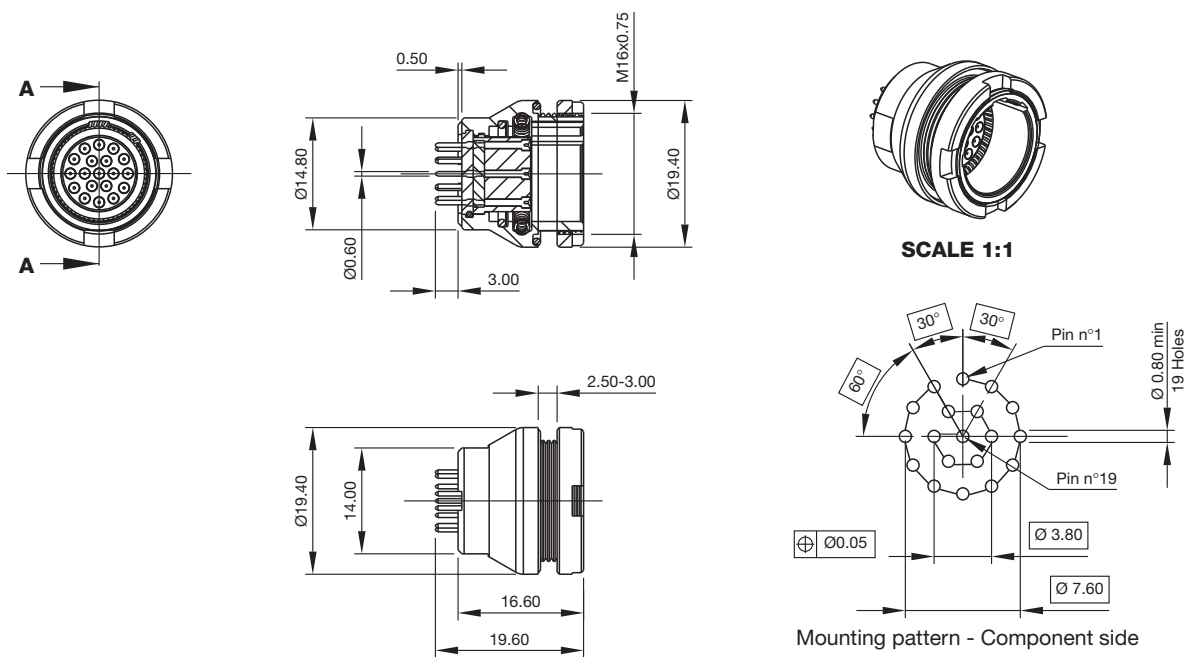
19 Ways Plug - Solder Cup Termination



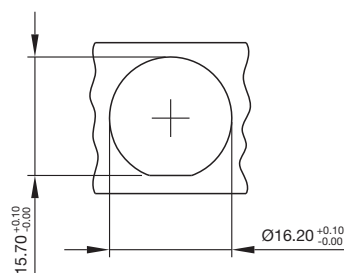
19 Ways Receptacle - Solder Cup Termination



19 Ways Receptacle - Dip Solder Termination



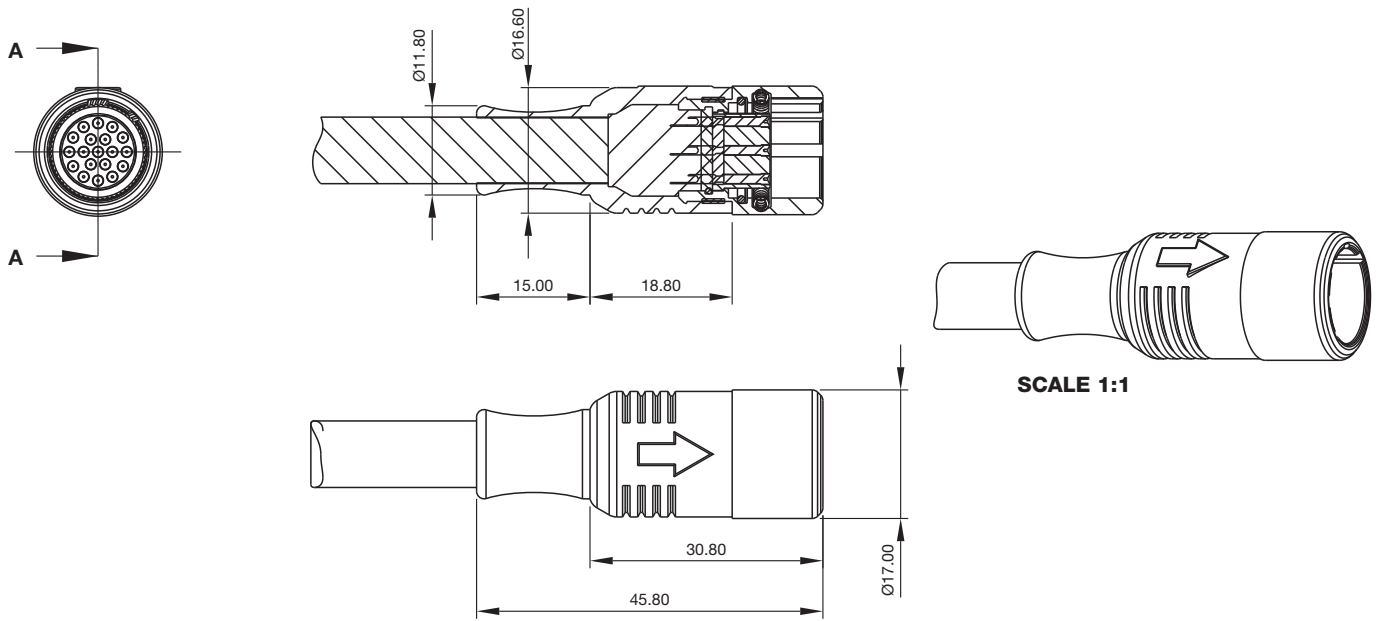
19 Ways Panel Cut-out



Panel thickness max 3mm

Dimensions are in mm

19 Ways Extension with Overmoulding and Cabling



19 Ways Extension - Solder Cup Termination

